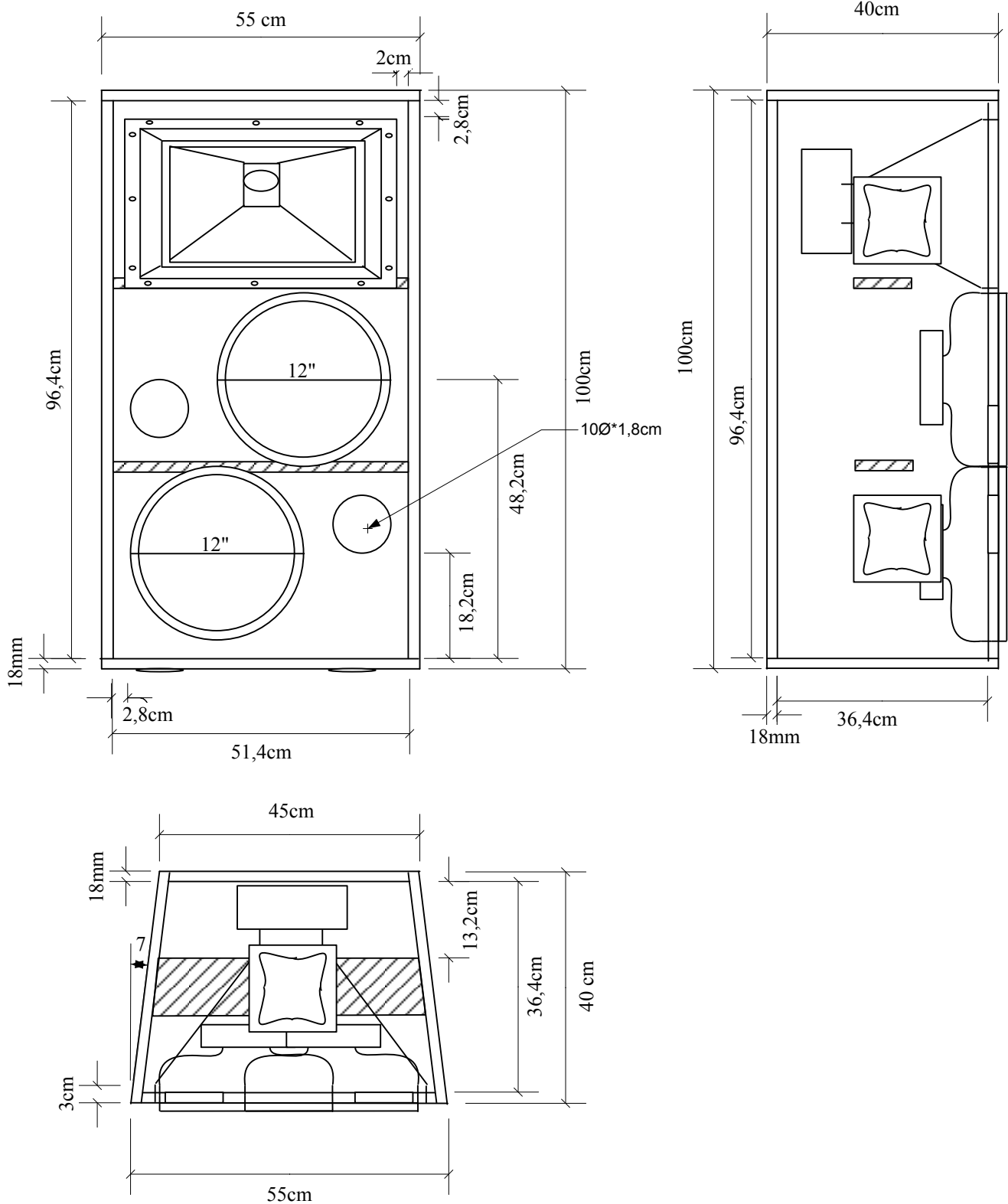


Model	Enclosure Design	Frequency Response	Efficiency	Power / imp.
SW-218	Bass reflex	38~ 128Hz -3dB	99,5dB 1W / 1M	1800W AES / 4ohm
Components	Kast: Berken multiplex 18mm			Netto inhoud 280Lts
	Subwoofer: 18Sound 18ND9300 900W/98dB 28-2500Hz			
	Highpass 30Hz Lowpass 120Hz 4de order, 40Hz/Q=3/G=+3dB 120Hz/Q=2/G=+1dB			
Ontwerp: van den Hoogen's Servicebedrijf / Boi van den Hoogen / www.boyzpc.nl / 28-08-2007				



Model	Enclosure Design	Frequency Response	Efficiency	Power / imp.
T2123	Fullrange vented	110~ 20KHz -3dB	100,5dB 1W/1M	800W AES / 4ohm
Components	Kast: Berken multiplex 18mm			Netto inhoud 158Ltr
	Bass/Mid: 18Sound 12MB606 50Hz-4000Hz/350W/8ohm			
	Driver: 18Sound ND2060 80w/8ohm/0,5-20Khz/ RCF H6040 60*40hoorn			
Highpass 120Hz 4de order 120Hz/Q=2/G=+1,5dB (700Hz/Q=1/G=+0,5dB) passief filter 1.2KHz/12dB/okt 4/8ohm				
Ontwerp: van den Hoogen's Servicebedrijf / Boi van den Hoogen / www.boyzpc.nl / 28-08-2007				