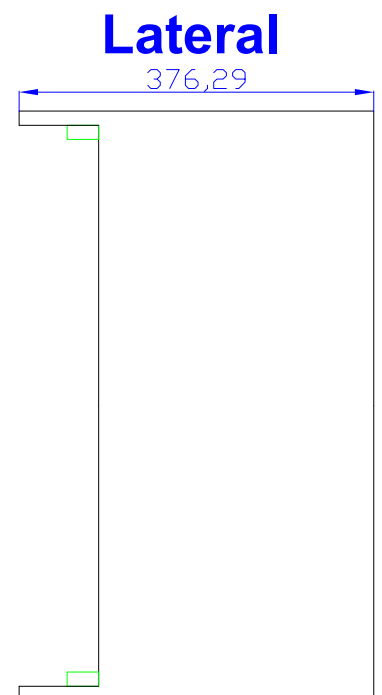
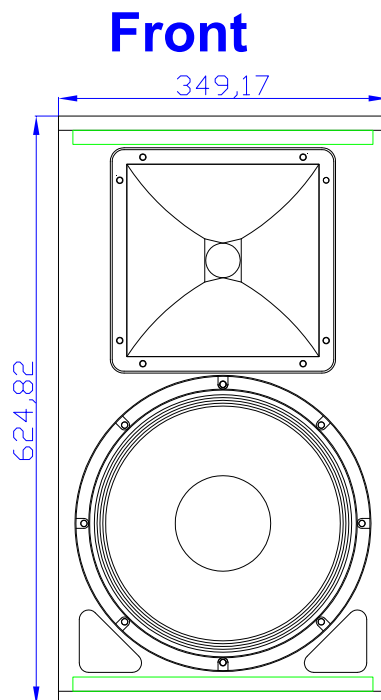
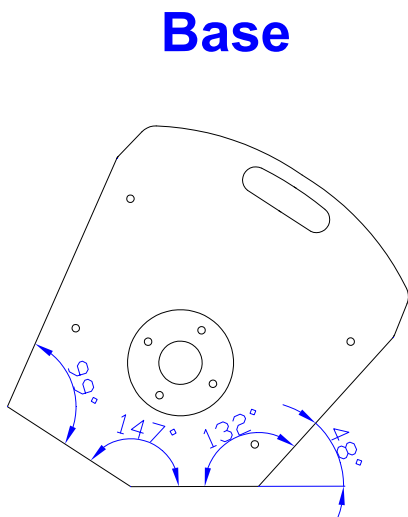


Technical Specifications

Acoustic cabinet:	FR12B
Description:	2 Way System. 12" and High Frequency unit
Power AES:	400 W.
Power Program:	800 W.
Sensitivity 2,83v @ 1m:	97 dB.
Max. SPL continuous:	123 dB.
Max. SPL peak:	129 dB.
Frequency response:	45 - 20.000Hz.
Coverage (H x V):	80° x 50°
Bass Loudspeakers:	12G40
Compression Driver:	CP755/ND
Constant Directivity Horn:	TD-385
Crossover:	FP-12B/2
Hardware:	External



12G40

KEY FEATURES

- High power handling (500 W AES)
- 3" edgewound copper voice-coil with polyimide fiber glass former
- Optimum winding length for increased linear excursion
- Designed for woofer applications

TECHNICAL SPECIFICATIONS

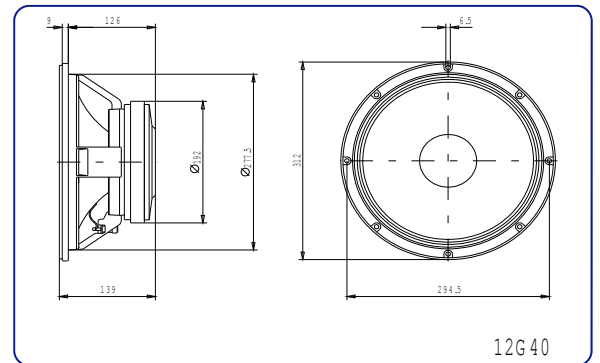
- | | |
|----------------------------|-----------------------|
| • Nominal diameter | 300 mm. 12 in. |
| • Rated impedance | 8 ohms |
| • Minimum impedance | 6.7 ohms |
| • Power capacity* | 500 w AES |
| • Program power | 1000 w |
| • Sensitivity | 97 dB 2.83v @ 1m @ 2π |
| • Frequency range | 35 - 4000 Hz |
| • Voice coil diameter | 77 mm. 3 in. |
| • Magnetic assembly weight | 6.3 kg. 13.9 lb. |
| • BL factor | 18.4 N / A |
| • Voice coil length | 20 mm |
| • Air gap height | 8 mm |
| • X damage (peak to peak) | 28 mm |

Notes:

*The power capacity is determined according to AES2-1984 (r2003) standard.
Program power is defined as the transducer's ability to handle normal music program material.



DIMENSION DRAWINGS



CP-755Nd

KEY FEATURES

- Composite structure diaphragm (Titanium dome & Mylar surround)
- Light neodymium magnet
- Optimized titanium phasing plug
- Superior high frequencies sound reproduction quality
- Extended frequency response (0.6 - 20 kHz)
- High sensitivity (112 dB)

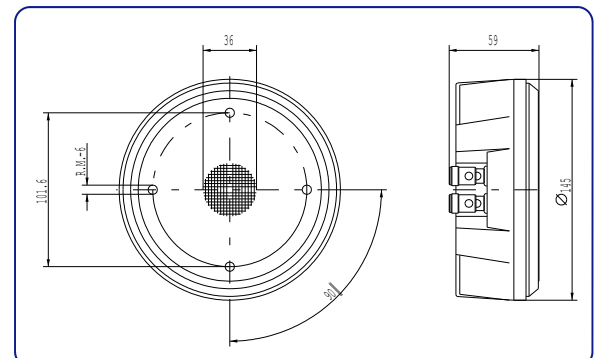
TECHNICAL SPECIFICATIONS

- | | |
|-------------------------|------------------------------------|
| • Throat diameter | 36 mm. 1.4" |
| • Rated impedance | 8 ohms |
| • D.C. Resistance | 5.5 ohms |
| • Power capacity* | 70 w AES above 1 kHz |
| • Program power | 140 w above 1 kHz |
| • Sensitivity** | 112 dB 1w @ 1m |
| • Frequency range | 600- 20000 Hz |
| • Voice coil diameter | 72.2 mm. 2.87 in. |
| • Recommended Crossover | 800 Hz or higher (12 dB/oct. min.) |
| • Net weight | 2.96 kg. 6.51 lb. |

Notes:

*The power capacity is determined according to AES2-1984 (r2003) standard.
Program power is defined as the transducer's ability to handle normal music program material.
**Sensitivity was measured at 1 m distance, on axis, with 1 w input, averaged in the range 1 - 7 kHz and coupled to a TD565 horn.

DIMENSION DRAWINGS



TD-385

KEY FEATURES

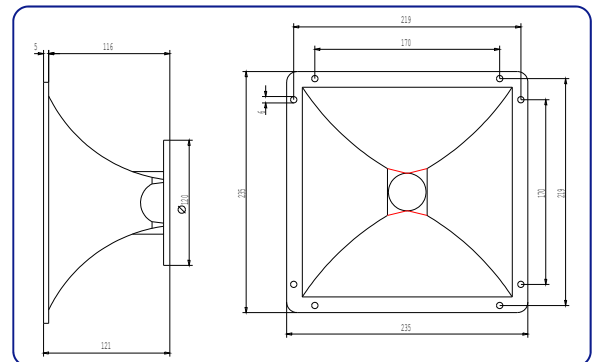
- Designed for compression drivers with 1.4" throat diameter
- It provides uniform response, on and off-axis with a neutral and natural frequency reproduction
- Coverage angles of 80° in the horizontal plane and 50° in the vertical plane
- Precise directivity control in the pass band
- Its square form provides more versatility when mounting in the enclosure

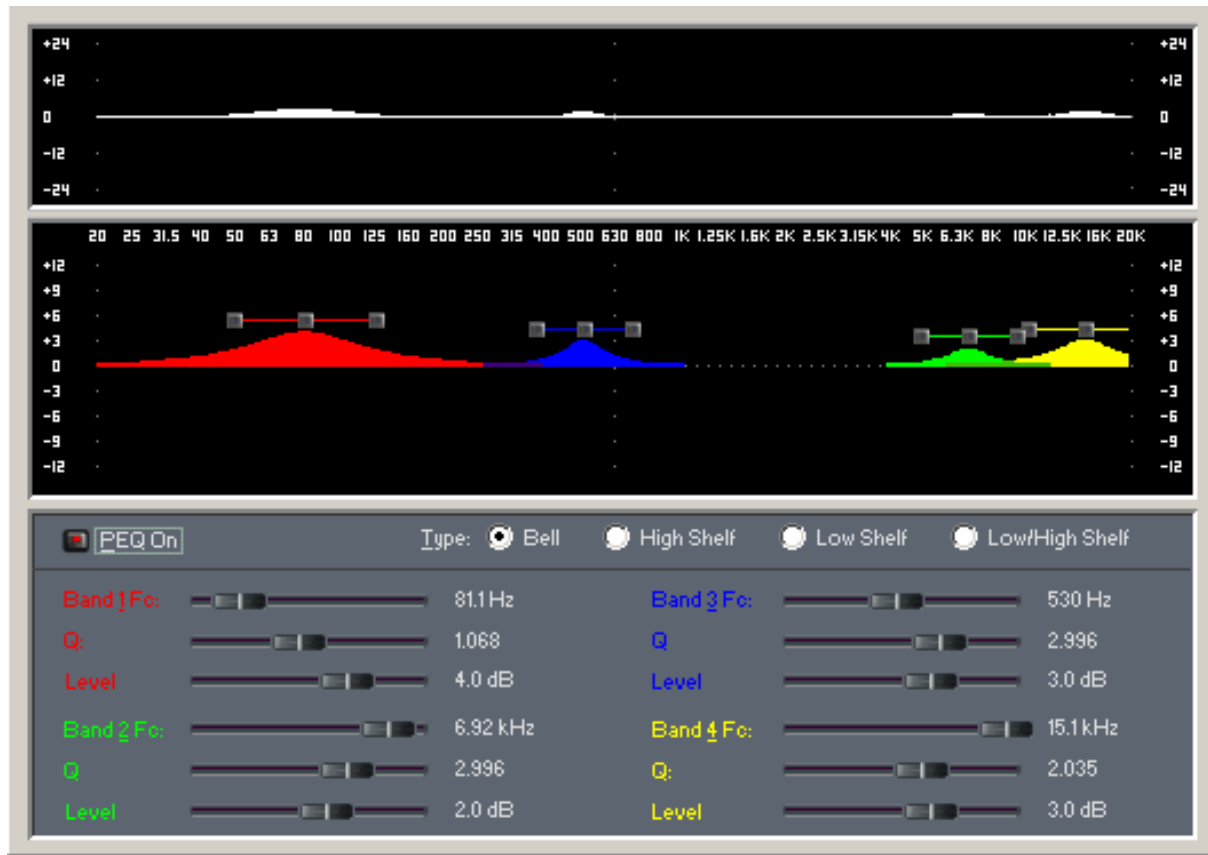
TECHNICAL SPECIFICATIONS

- Throat diameter 36 mm. 1.4 in.
- Horizontal beamwidth 80° (+16°, -32°)
(-6 dB, 1 - 20 kHz)
- Vertical beamwidth 50° (+29°, -14°)
(-6 dB, 1.6 - 20 kHz)
- Directivity factor (Q) 12.4 (average 0.63 - 16 kHz)
- Directivity index (DI) 10.5 dB (+3.5 dB, -3.2 dB)
- Cutoff frequency 800 Hz
- Dimensions (WxHxD) 235x235x120 mm.
9.25x9.25x4.72 in.
- Cutout dimensions (WxH) 204x202 mm.
8.03x7.95 in.
- Net weight 1.2 kg. 2.64 lb.
- Shipping weight 1.53 kg. 3.37 lb.
- Construction Cast aluminium.
Connection of driver by four screws on a 101.6 mm. diameter bolt circle.



DIMENSION DRAWINGS





FR12B/2 Crossover

