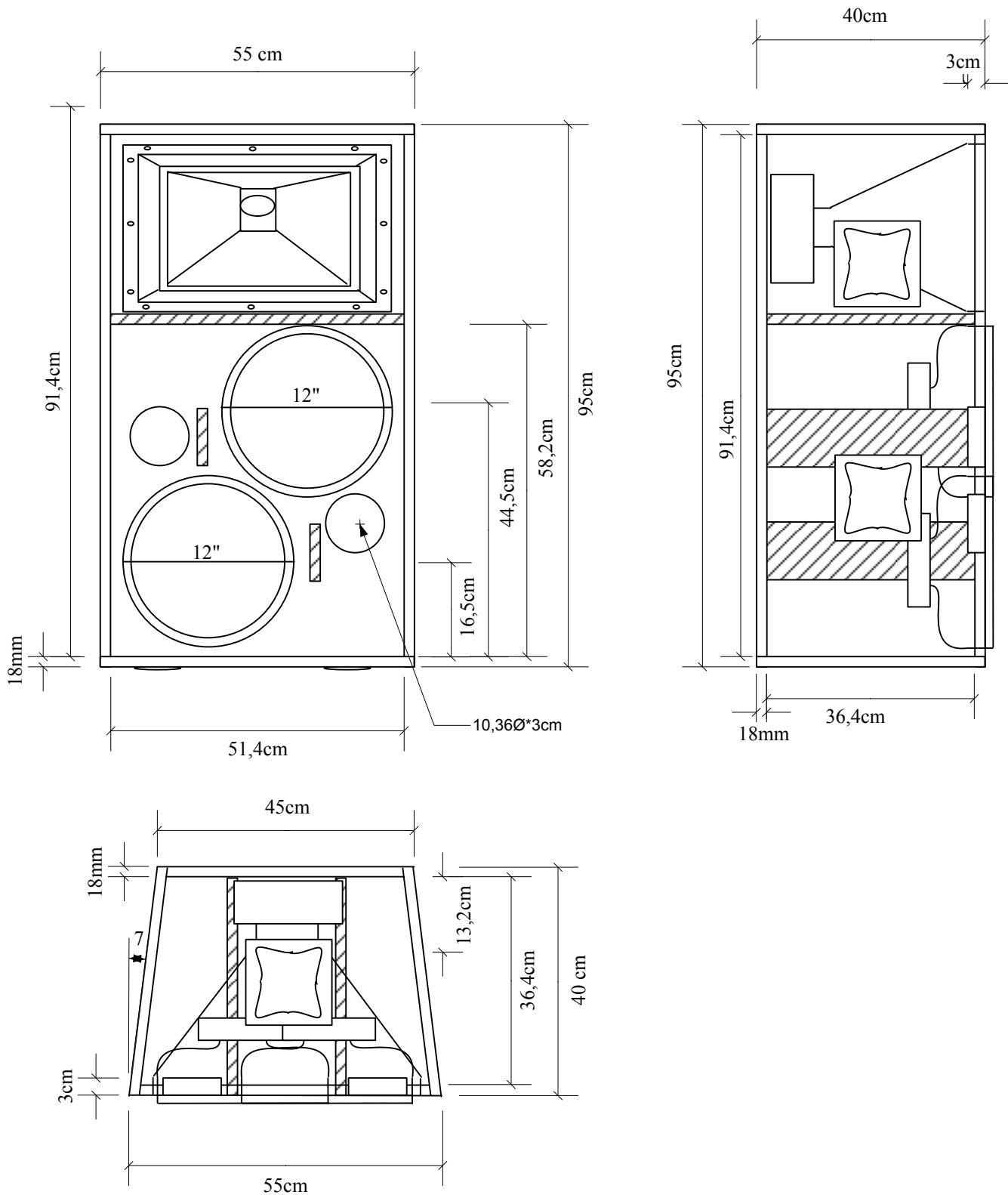


Model	Enclosure Design	Frequency Response	Efficiency	Power / imp.
SW-218	Bass reflex	38~ 122Hz	100dB 1W / 1M	1600W AES / 4ohm
Components	Kast: Berken multiplex 18mm			Netto inhoud 280Ltr
	Subwoofer: 2x RCF L18P200N 800W/98dB 32-2000Hz			
	Highpass 30Hz/Lowpass 120Hz 4de/8ste order 40Hz/Q=3/G=+3dB			
Ontwerp: van den Hoogen's Servicebedrijf / Boi van den Hoogen / www.boyzpc.nl / 17-11-2003				



Model	Enclosure Design	Frequency Response	Efficiency	Power / imp.
T2123	Fullrange vented	116~ 20KHz -3dB	100dB 1W/1M	900W AES / 4ohm
Components	Kast: Berken multiplex 18mm			Netto inhoud 97,5Ltr
	Bass/Mid: RCF L12P540 50Hz-4000Hz/400W/8ohm			
	Driver: RCF N850 0,5-20KHz/90w/8ohm - hoorn H6040 60*40			
	Highpass 120Hz 8ste order EQ passief filter 1200Hz 12dB/okt 4/ 8ohm			
Ontwerp: van den Hoogen's Servicebedrijf / Boi van den Hoogen / www.boyzpc.nl / 17-11-2003				